

OLIVER WYMAN

PlaneStats.com

Aviation, Aerospace and Defense



September 23, 2011

PlaneStats.com
July 2011 On-Time Performance

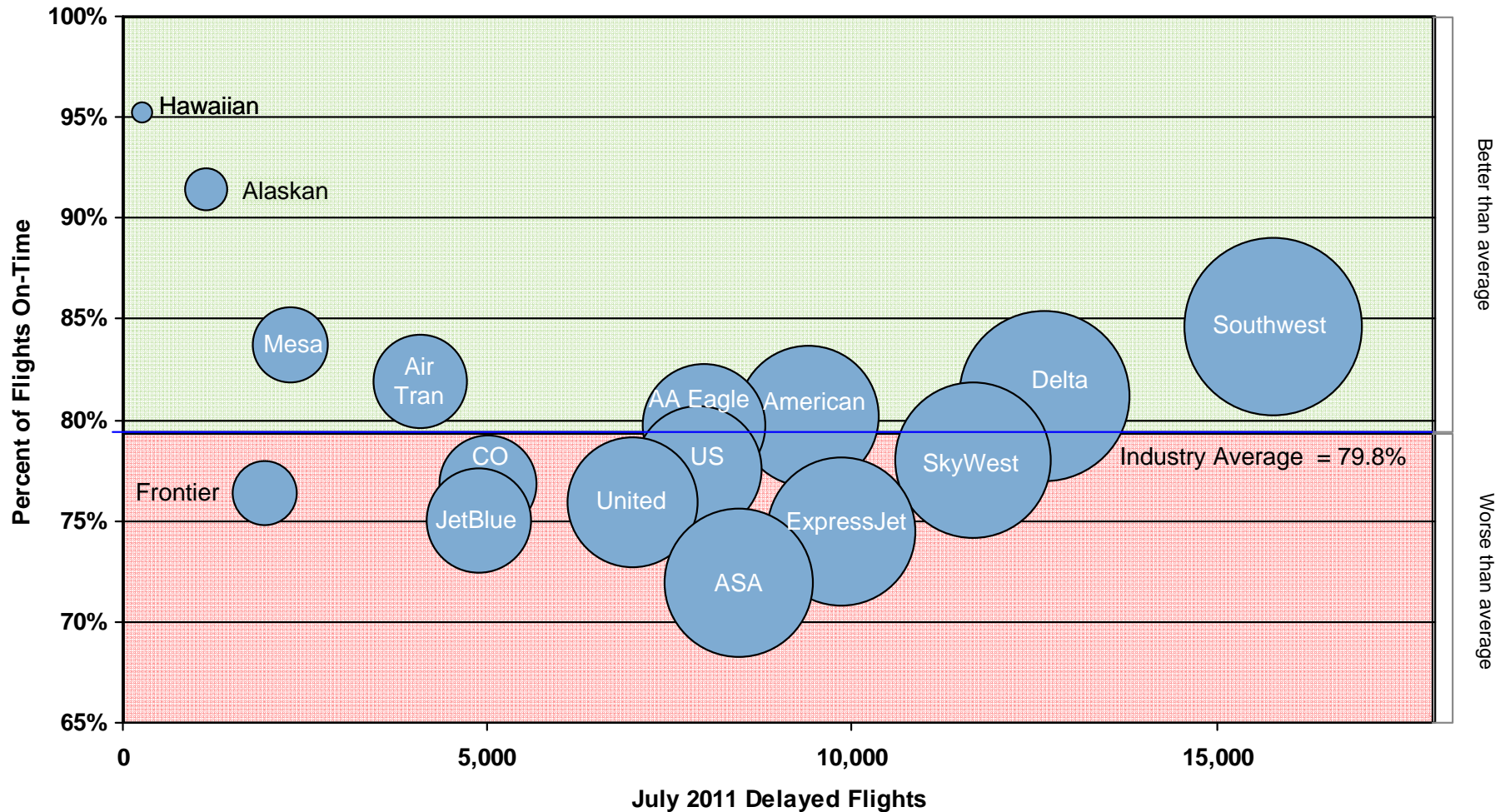
July 2011 On-Time Performance Ranking

Carrier	July 2011				On Time		Completion	
	DPTRS	Delays	Delay Minutes	XNLD	OTP Rate ¹	OTP Rank	Comp Rate	Comp Rank
Hawaiian	5,976	285	13,480	2	95.2%	1	100.0%	1
Alaska	13,331	1,1153	59,251	37	91.4%	2	99.7%	2
Southwest	102,374	15,790	864,702	565	84.6%	3	99.5%	5
Mesa	14,193	2,317	167,729	370	83.7%	4	97.5%	12
AirTran	22,665	4,098	255,391	105	81.9%	5	99.5%	3
Delta	66,897	12,659	785,321	635	81.1%	6	99.1%	7
American	47,249	9,407	551,073	991	80.1%	7	97.9%	9
AA Eagle	39,286	7,986	425,618	1,402	79.7%	8	96.6%	16
SkyWest	53,082	11,684	682,892	1,438	78.0%	9	97.4%	13
US Airways	35,196	7,914	437,426	599	77.5%	10	98.3%	8
Continental	21,602	5,014	269,665	111	76.8%	11	99.5%	4
Frontier	8,230	1,953	117,013	265	76.3%	12	96.9%	15
United	29,056	7,003	472,128	733	75.9%	13	97.5%	10
JetBlue	19,549	4,889	309,011	114	75.0%	14	99.4%	6
ExpressJet	38,513	9,877	619,317	1,097	74.4%	15	97.2%	14
ASA	30,020	8,449	620,093	768	71.9%	16	97.5%	11

Source: PlaneStats.com Operations & Productivity > OnTime Segment. Comair and Pinnacle stopped voluntary reporting in January 2011. OTP Rate does not include Cancelled or Diverted flights

20% of July's flights experienced an arrival delay of more than 15 minutes

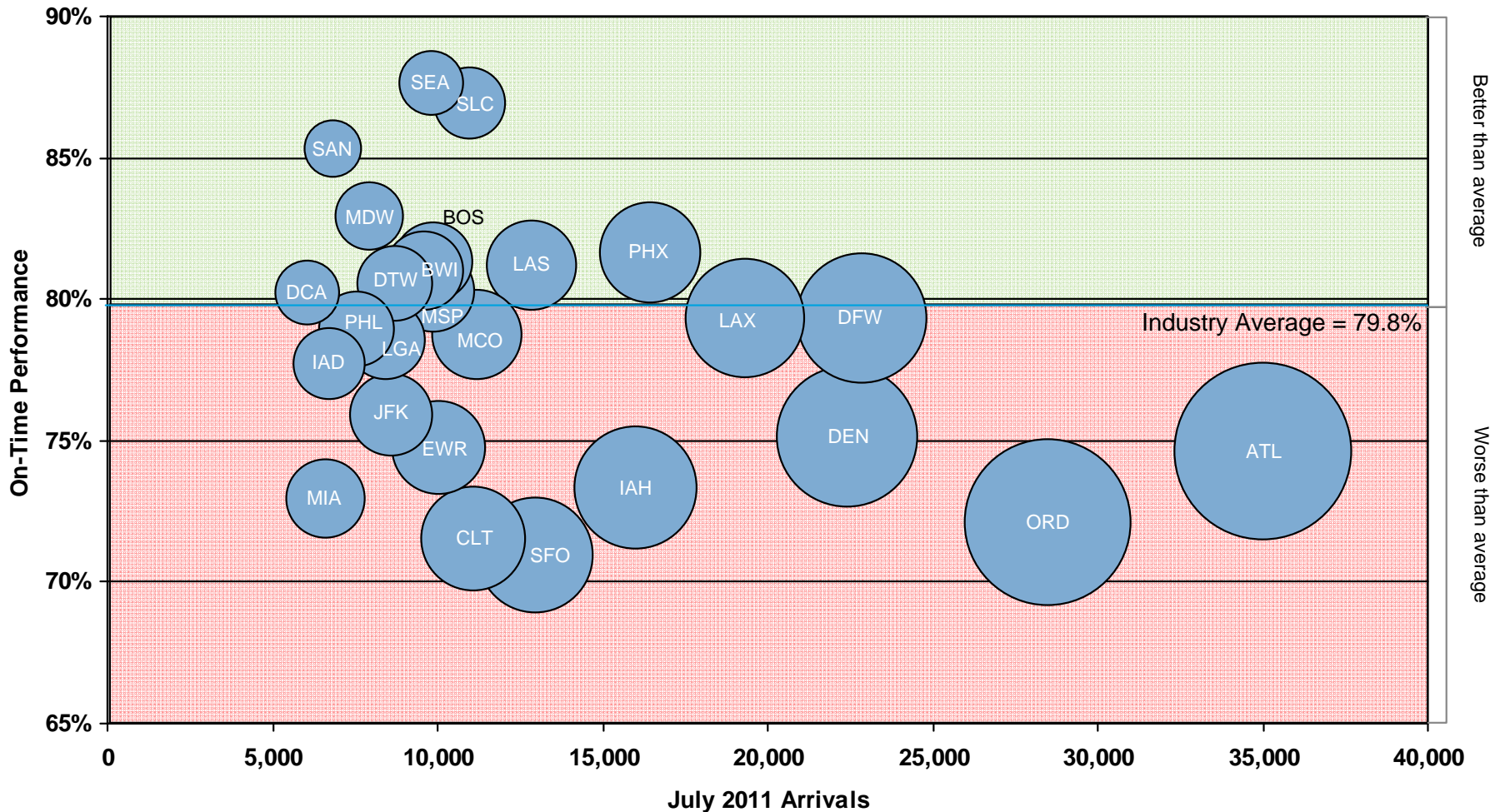
Southwest improved its performance and reported better than average results



Source: PlaneStats.com Operations & Productivity > OnTime Segment. Comair (OH) and Pinnacle (9E) stopped voluntary reporting in January 2011.
 Area of the circle represents total delay minutes.
 On-Time flight percentage does not include Cancelled or Diverted flights

There were 26 airports with 1,000, or more, delayed arrivals in July, accounting for 68% of July's total delays

The large hubs all performed worse than average



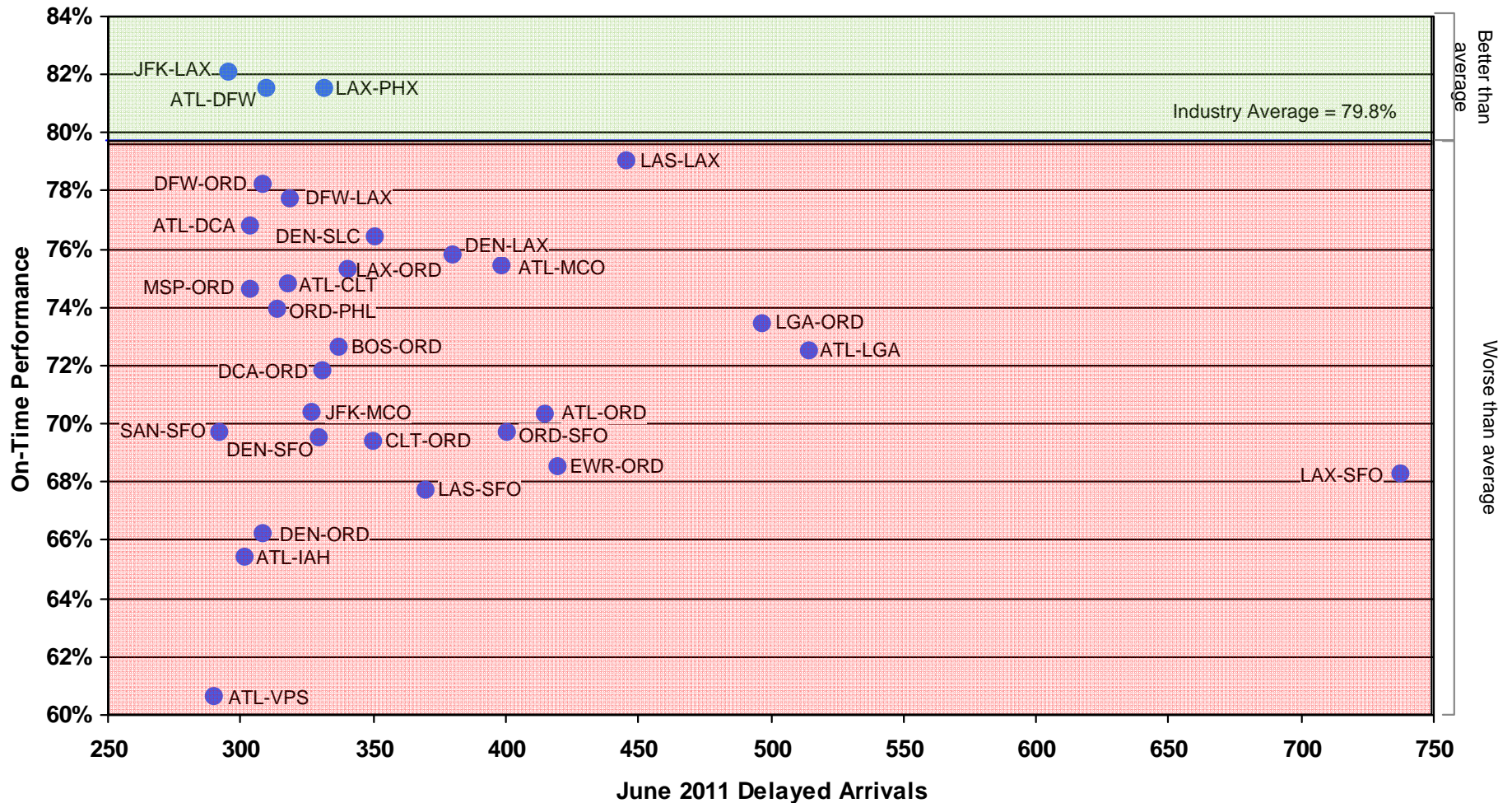
Source: PlaneStats.com Operations & Productivity > On-time Segment. Comair (OH) and Pinnacle (9E) stopped voluntary reporting in January 2011.

Area of the circle represents total delays

On-Time flight percentage does not include Cancelled or Diverted flights

There were 110,478 flights in July with arrivals that were at least 15 minutes later than scheduled.

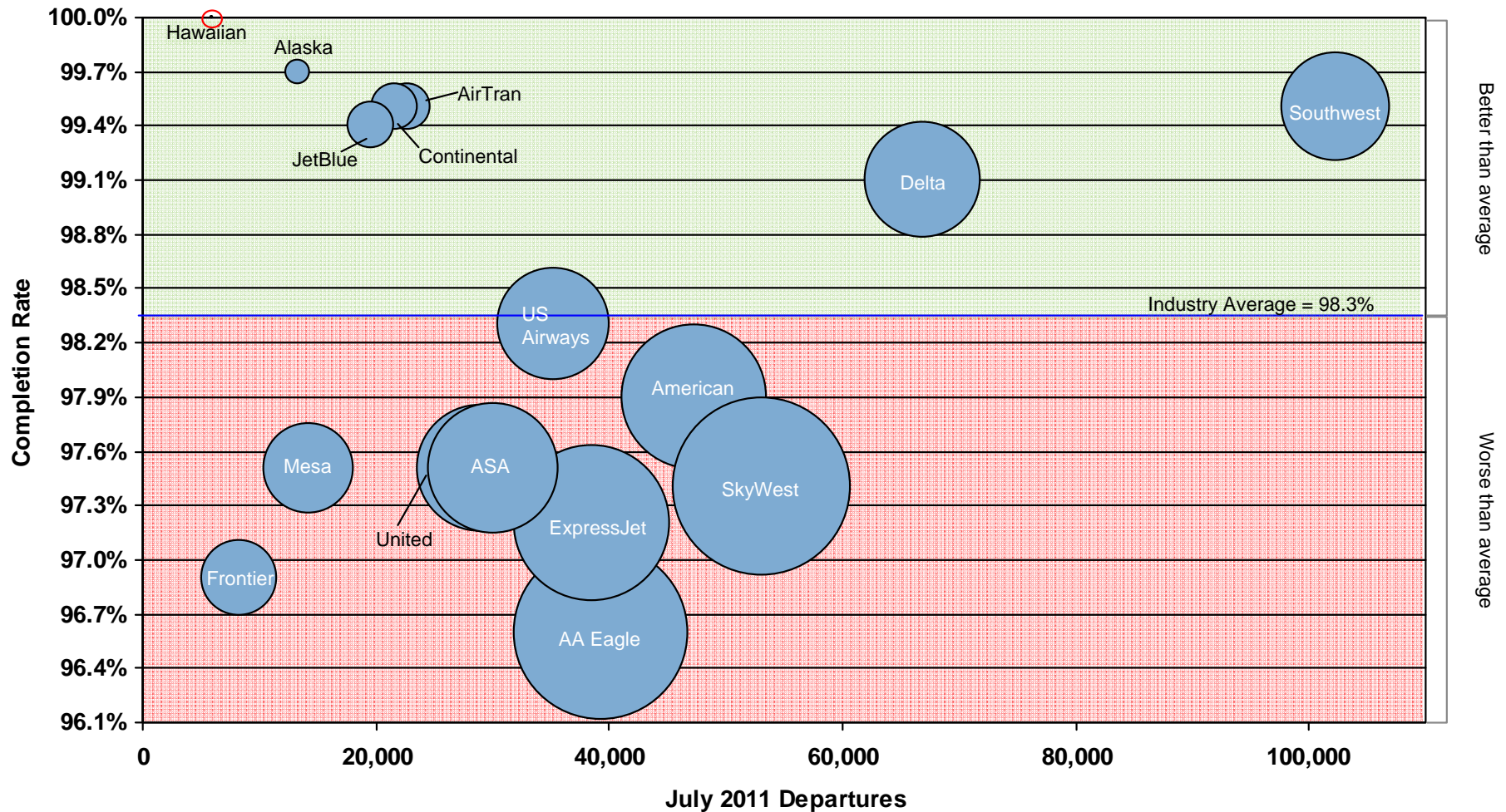
These 30 nonstop segments accounted for 10% of July's total delays



Source: PlaneStats.com Operations & Productivity > On-time Segment. Comair (OH) and Pinnacle (9E) stopped voluntary reporting in January 2011
 On-Time flight percentage does not include Cancelled or Diverted flights

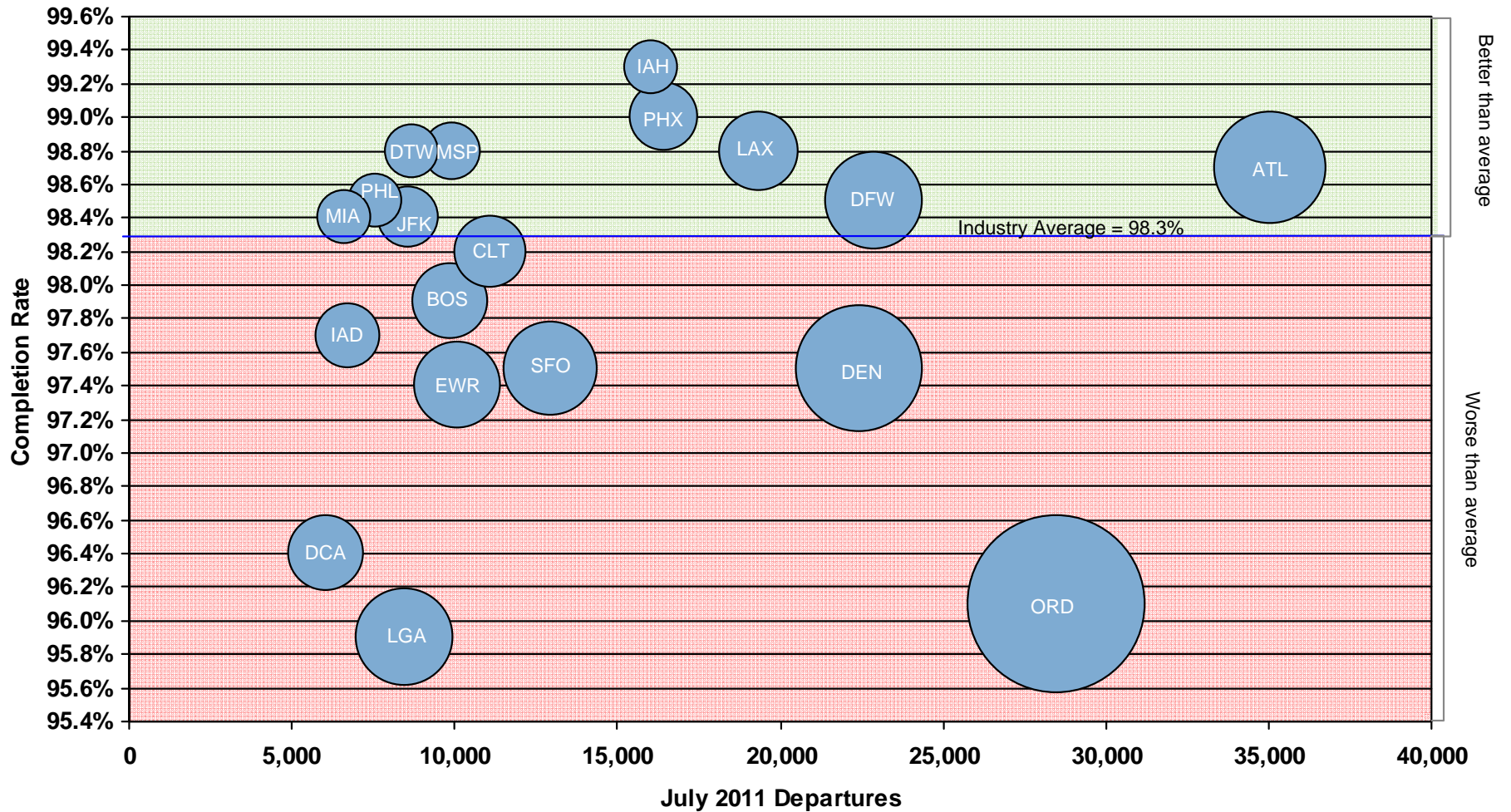
A total of 9,232 flights (1.7%) were cancelled in July 2011

Southwest and Delta were the two best performing large airlines



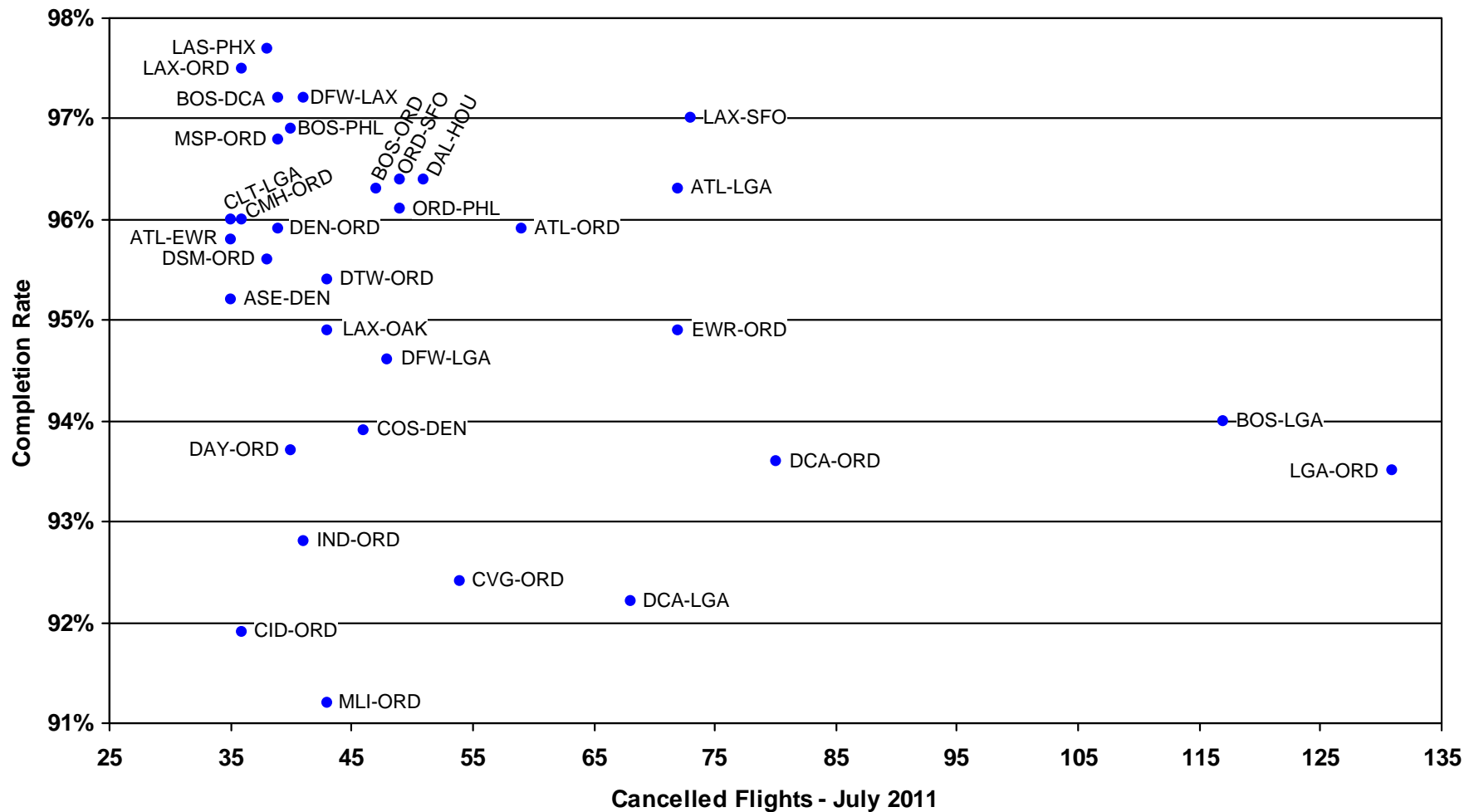
Source: PlaneStats.com Operations & Productivity > On-time Segment. Comair (OH) and Pinnacle (9E) stopped voluntary reporting in January 2011. Area of the circle represents total cancellations. On-Time flight percentage does not include Cancelled or Diverted flights

19 airports had at least 100 cancelled flights accounting for 5,431 cancellations, or 58.8% of all cancelled flights in July 2011



Source: PlaneStats.com Operations & Productivity > On-time Segment. Comair (OH) and Pinnacle (9E) stopped voluntary reporting in January 2011. Area of the circle represents total cancellations. On-Time flight percentage does not include Cancelled or Diverted flights

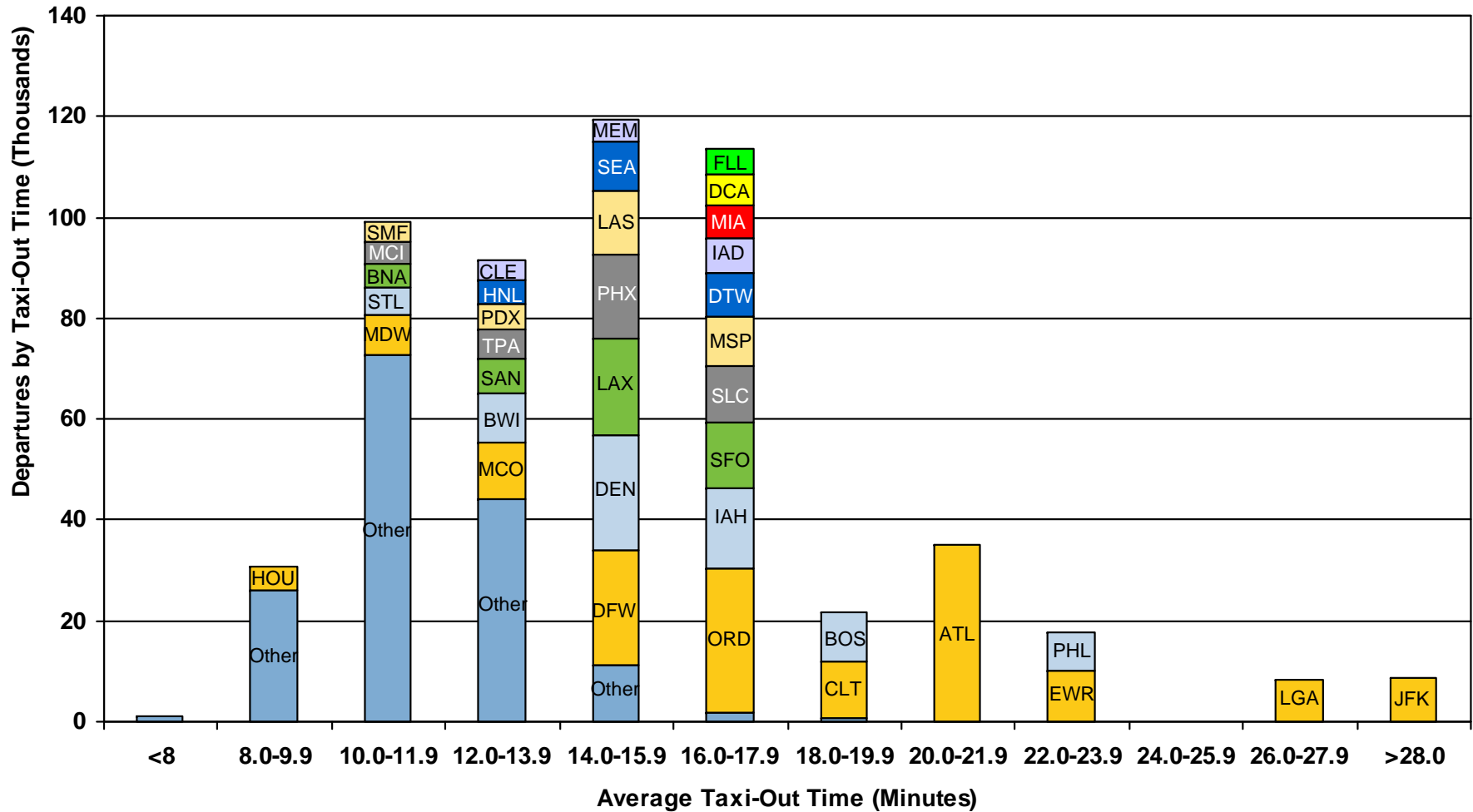
There were 33 city pairs with 35 or more cancelled flights, representing 18.6% of all July 2011 flight cancellations



▶ The industry average completion rate in July was 98.3%. All of these flight segments had completion rates that were below the industry average

Source: PlaneStats.com Operations & Productivity > Ontime Segment. Comair (OH) and Pinnacle (9E) stopped voluntary reporting in January 2011.

The average taxi-out time in July was 15.2 minutes



Source: PlaneStats.com Operations & Productivity > Ontime Segment. Comair (OH) and Pinnacle (9E) stopped voluntary reporting in January 2011. Airports with more than 4,000 departures are identified individually, all others are grouped into "Other".

Airport codes used in this report

Code	Airport
ASE	Aspen, CO
ATL	Atlanta, GA
BNA	Nashville, TN
BOS	Boston, MA
BWI	Baltimore, MD
CID	Cedar Rapids, IO
CLE	Cleveland, OH
CLT	Charlotte, NC
CMH	Columbus, OH
COS	Colorado Springs, CO
CVG	Cincinnati, OH
DAL	Dallas, Love Field, TX
DAY	Dayton, OH
DCA	Washington, Reagan, DC
DEN	Denver, CO
DFW	Dallas/Fort Worth, TX
DSM	Des Moines, IA

Code	Airport
DTW	Detroit, MI
EWR	Newark, NJ
FLL	Fort Lauderdale, FL
HNL	Honolulu, HI
HOU	Houston, Hobby, TX
IAD	Washington, Dulles, DC
IAH	Houston, Bush, TX
IND	Indianapolis, IN
JFK	New York, Kennedy, NY
LAS	Las Vegas, NV
LAX	Los Angeles, CA
LGA	New York, La Guardia, NY
MCI	Kansas City, MO
MCO	Orlando, FL
MDW	Chicago, Midway, IL
MEM	Memphis, TN

Code	Airport
MIA	Miami, FL
MLI	Moline, IL
MSP	Minneapolis/St. Paul, MN
OAK	Oakland, CA
ORD	Chicago, O'Hare, IL
PDX	Portland, OR
PHL	Philadelphia, PA
PHX	Phoenix, AZ
SAN	San Diego, CA
SEA	Seattle, WA
SFO	San Francisco, CA
SLC	Salt Lake City, UT
SMF	Sacramento, CA
STL	Saint Louis, MO
TPA	Tampa, FL
VPS	NW Florida Regional

About Oliver Wyman and PlaneStats.com

Oliver Wyman's global Aviation, Aerospace & Defense practice helps passenger and cargo carriers, OEM and parts manufacturers, aerospace / defense companies, airports, and MRO and other service providers develop value growth strategies, improve operations, and maximize organizational effectiveness. Our deep industry expertise and our specialized capabilities make us a leader in serving the needs of the industry. For more information on Oliver Wyman, please visit

www.OliverWyman.com

PlaneStats.com by Oliver Wyman brings together reliable cross-industry data and a powerful collection of analytical tools that facilitate the development of actionable insights. PlaneStats.com makes it possible to easily access and analyze worldwide airline schedules and fleet composition. For the U.S. market, it is also possible to analyze aircraft-specific operating costs, route-level P&L reporting, the O&D composition of onboard passenger loads, and average fare comparisons across carriers and markets.

For more information about this report, or about PlaneStats.com, please contact Peter Otradovec

- Phone
 - Business +1 (214) 758-1876
 - Mobile +1 (214) 668-3897
- Email Peter.Otradovec@OliverWyman.com

OLIVER WYMAN